

WITH PRINTABLE PRIMER

# VersaUV

## LEF-300

DIRECT TO OBJECT UV-LED FLATBED PRINTER

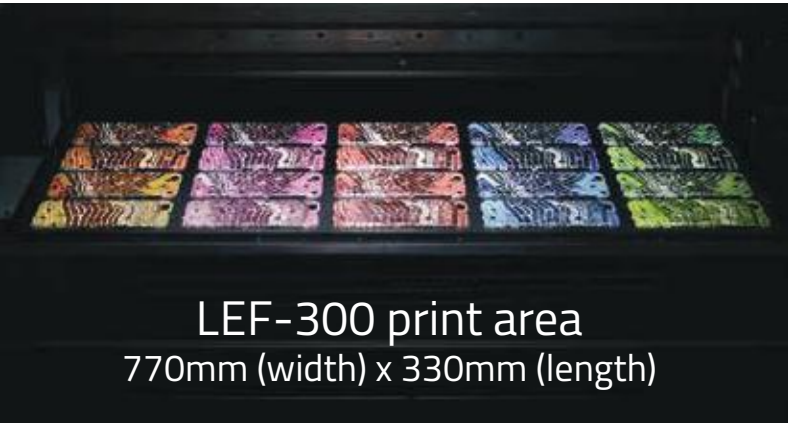


# VersaUV

## LEF-300

# IMAGE FACTORY

— PRODUCTIVE DIGITAL CUSTOMISATION —



LEF-300 print area  
770mm (width) x 330mm (length)



## PRODUCTIVE

BUILT TO MEET HIGH VOLUME DEMANDS. The VersaUV LEF-300 has a large capacity print area of 770mm wide by 330mm long. With four print heads and two UV-LED lamps, the LEF-300 enables fast bi-directional direct printing, with White and Clear (gloss) inks delivered through two channels each for even faster printing.\*

To meet the needs of production site customers, the LEF-300 includes input/output connections that support external devices such as warning lights and automated jig replacement.



\*When in CMYK+Gl+Wh ink configuration

## EASY-TO-USE

ROLAND VersaWorks Dual RIP SOFTWARE includes all the advanced and ease-of-use features of VersaWorks and natively supports both PostScript and PDF files for improved file reproduction when layers and transparencies are used. New features such as Special Colour Plate Generation allows white or gloss data to be created from print artwork and the Maintain Clipped Position function allows greater accuracy when printing special effects and white ink.

## SAFE-TO-USE

THE VersaUV LEF-300 COVER SAFEGUARDS USERS by fully encasing moving parts. It prevents dust from entering the print area, while keeping the UV-LED light contained. Ink cartridges are located on the side of the device to allow replacement during operation without the need to open the cover. All ensuring that the device can be used in any busy print shop, industrial or retail environment.



## VERSATILE

PRINT ONTO A HUGE VARIETY OF SUBSTRATES with the VersaUV LEF-300, such as acrylic, wood, board, plastic, fabric, leather and eco-leather. A vacuum table makes it easy to hold materials in place and will accommodate items up to 100 mm in height and 8 kg in weight. Directly print on to a wide range of items including pens, mobile phone cases, customised corporate merchandise, signs, personalised awards, giftware, industrial goods, product prototypes and more. The possibilities are virtually endless.

With the LEF-300's new on-board ECO-UV Primer ink option, you can quickly and conveniently image onto materials like glass, metal, crystal and plastic for customisation by printing primer directly from VersaWorks Dual RIP before putting down CMYK, and White and Clear inks.\*\*

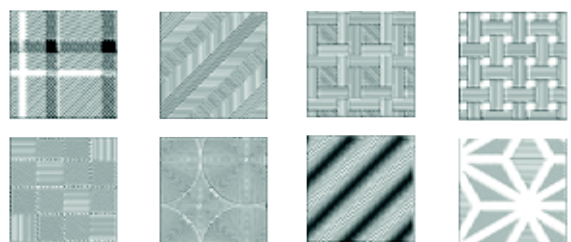
### 2 INK CONFIGURATIONS AVAILABLE



## HIGH QUALITY

ADVANCED ECO-UV INK PRODUCES OUTSTANDING RESULTS and is available in 220cc or more economical 500cc cartridges.^ Designed for flexibility, the ink conforms around complex corners and curves for decoration of a range of items. A base layer of White ink allows clear or dark coloured materials to be printed. And layers of Clear ink can be applied to create simulated embossing and 3D textures and the included Roland Texture System Library has 72 ready-to-use texture patterns.

### ROLAND TEXTURE SYSTEM LIBRARY



\*\*Ink adhesion may vary depending on the substrate and printing conditions. Please check ink adhesion prior to production.

^White ink only available in 220cc cartridges



# VersaUV LEF-300

Specifications		
Printing technology		Piezoelectric inkjet
Media	Dimensions	Max. 800 (width) x 360 (length) x 100 (height) mm (31.5 x 14.2 x 3.94 in.)
	Weight	Max. 8 kg (18 lbs.)
Printing width and length		Max. 770 (width) x 330 (length) mm (30.3 x 13 in.)
Ink cartridges	Type and capacity	ECO-UV (EUV, EUV4) 220cc cartridge ECO-UV (EUV4) 500cc cartridge (White ink is not available in 500cc cartridges.)
	Colours	6 colours (cyan, magenta, yellow, black, white and gloss) 6 colours (cyan, magenta, yellow, black, white and gloss) and primer
Ink-curing unit		UVLED lamp x 2
Print resolution (dpi)		Max. 1,440 dpi
Distance accuracy*		Error of less than ±0.3 mm (±11.8 mil) or ±0.3% of the specified distance, whichever is greater
Repeat accuracy*		Error of less than ±0.2 mm (±7.9 mil) or ±0.1% of the specified distance, whichever is greater
Connectivity		Ethernet (10BASE-T/100BASE-TX, automatic switching)
Power-saving function		Automatic sleep feature
Power requirements		AC 100 to 240 V ± 10%, 2.1 A, 50/60 Hz
Power consumption	During operation	Approx. 178 W
	Sleep mode	Approx. 18 W
Acoustic noise level	During operation	60 dB (A) or less
	During standby	49 dB (A) or less
Dimensions		1,560 (width) x 955 (depth) x 576 (height) mm (61.4 x 37.6 x 22.7 in.), [ When the ink-cartridge tray is attached; 1,866 x 955 x 576 mm (73.5 x 37.6 x 22.7 in.) ]
Weight		144 kg (317.5 lbs.)
Environment	Power on	Temperature: 20 to 32°C (68 to 90°F) (22°C [72°F] or higher recommended), Humidity: 35 to 80% RH (non-condensing)
	Power off	Temperature: 5 to 40°C (41 to 104°F), Humidity: 20 to 80% RH (non-condensing)
Included items		Roland VersaWorks Dual RIP & PRINT MANAGEMENT SOFTWARE, User's Manual, Pad trays, Power cable etc

\* Temperature: 23°C (73°F), humidity: 50%

Options				
			Model	Description
ECO-UV Ink	EUV / EUV4	220cc/ 500cc	EUV-CY / EUV4-CY / EUV4-5CY EUV-MG / EUV4-MG / EUV4-5MG EUV-YE / EUV4-YE / EUV4-5YE EUV-BK / EUV4-BK / EUV4-5BK EUV-WH / EUV4-WH* EUV-GL / EUV4-GL / EUV4-5GL	Cyan Magenta Yellow Black White Gloss
			Primer	220cc
Cleaning liquid		220cc	SL-CL	1 pc.

\* White ink is not available in 500cc cartridges.

\*\* Primer ink adhesive may vary depending on substrate and conditions. Testing ink adhesion prior to production is recommended.

Roland VersaWorks Dual System Requirements	
Operating system	Windows® 10 (32/64-bit) Windows® 8/8.1 (32/64-bit) Windows® 7 Professional / Ultimate (32/64-bit)
CPU	Intel® Core™2 Duo, 2.0 GHz or faster recommended
RAM	2 GB or more recommended
Video card and monitor	A resolution of 1,280 x 1,024px or more
Free hard-disk space	40 GB or more
Hard-disk file system	NTFS format
Optical drive	DVD-ROM drive

\* Roland VersaWorks Dual is a 32-bit application, which runs on 64-bit Windows® with WoW64 (Windows 32-bit on Windows 64-bit).

Optional Air Filtration System	
	
<p>An optional Air Filtration System is available for the VersaUV LEF-300.</p> <p>This includes an activated carbon filter, ink storage facility and automatic on / off functionality. This unit can be placed easily underneath the LEF-300.</p>	

Print speeds					
CMYK		WHITE		CLEAR	
High Quality:	1.39m <sup>2</sup> /h	High Quality:	1.07m <sup>2</sup> /h	Gloss Varnish:	1.26m <sup>2</sup> /h
Standard:	2.26m <sup>2</sup> /h	Standard:	2.26m <sup>2</sup> /h	Matte Varnish:	2.19m <sup>2</sup> /h



Vaporised components may slightly irritate the eyes, nose and/or throat during and following printing with this product. If continuously printing in a closed space, the density of volatile compositions will accumulate and may irritate the eyes, nose and/or throat. Roland DG strongly recommends that you install a ventilation system and use this product in a well-ventilated room. For more information, please contact your local distributor or dealer.

## About White Ink

Due to the nature of white ink, the pigment may settle in the cartridge and ink flow system, requiring you to shake the cartridge before each use.

Roland DG reserves the right to make changes in specifications, materials or accessories without notice. Actual output may vary. For optimum output quality, periodic maintenance to critical components may be required. Please contact your Roland DG dealer for details. No guarantee or warranty is implied other than expressly stated. Roland DG shall not be liable for any incidental or consequential damages, whether foreseeable or not, caused by defects in such products. PANTONE® is the property of Pantone LLC. All other trademarks are the property of their respective owners. Reproduction or use of copyrighted material is governed by local, national, and international laws. Customers are responsible for observing all applicable laws and are liable for any infringement. Roland DG Corporation has licensed the MMP technology from the TPL Group.



Promoted and Supported by: **APSom Infotex Ltd.**

CIN-U74899DL1993PLC054306

For more information please contact: Ph.: +91-120-4897950, email: sales@apsom.com | www.apsom.com

Product names, logos, brands, photographs and other trademarks are property of their respective trademark holders

144, 1st Floor, Laxmi Plaza, Laxmi Indl. Estate, New Link Road, Andheri (W), Mumbai-400053. Tel.: 022-42460802/07/08

Product Manager - Customization: 09810164378

North - Delhi - 09350205230, Chandigarh - 09810047561/9815689933, Lucknow - 09818800517/09935142972, Jaipur - 09414024665, Patna - 09304735004/9334506323, Dehradun - 09810047561, South - Bengaluru - 777/V 13<sup>th</sup> Main 2<sup>nd</sup> Cross Hal II Stage, 100 ft road, Indira Nagar, Tel.: 080-42042390/09446192909, Chennai - 09382170774, Hyderabad - 09394516042, Kochi - 09061830008, East - Bhubneshwar - EB-28, Stage V, BDA Colony, Laxmi Sagar, Tel.: +91-674-2577081, Phone: 09337292027, Kolkata - 57/1, N.S.C. Bose Road, Tel.: 033-40074807/09339149011, Guwahati - 09339149011/9435106913, Ranchi - 07050486270, Raipur - 08668221668, West - Mumbai - 144, 1st Floor, Laxmi Plaza, Laxmi Indl. Estate, New Link Road, Andheri (W), Mumbai-400053. Tel.: 022-42460802/07/08, Ahmedabad - 09824077124/9824092323, Pune - 09705123405